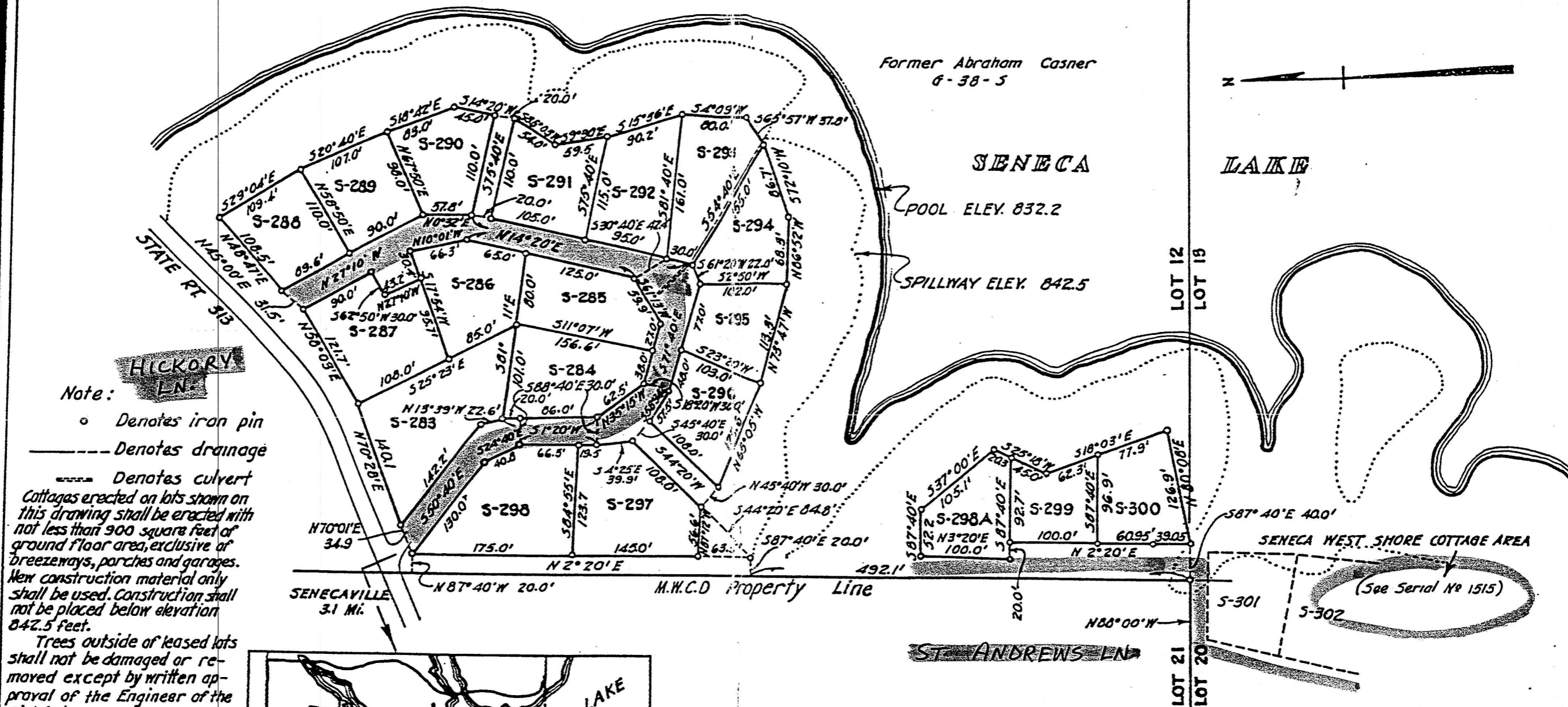
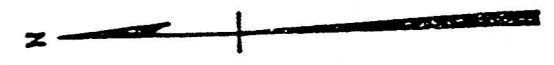


Former Abraham Casner  
6-38-5



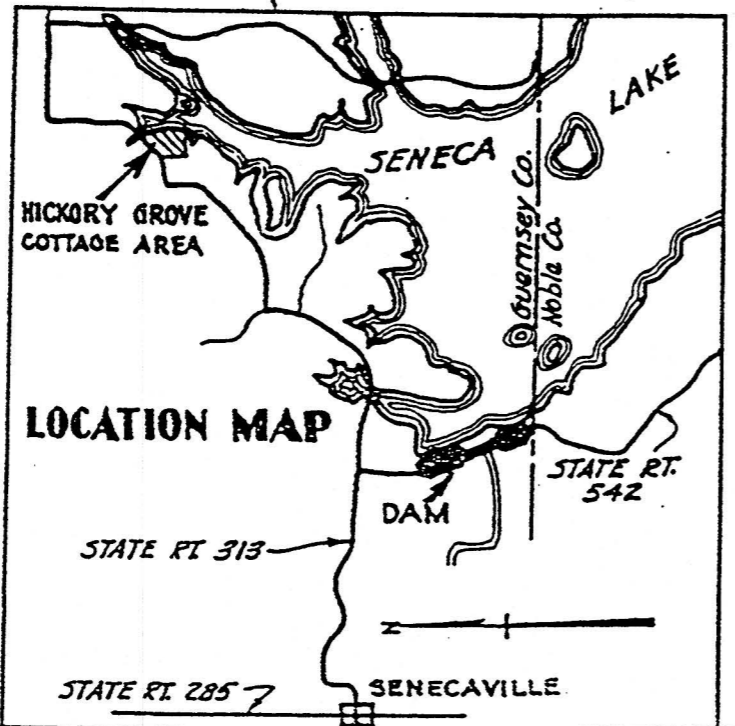
**HICKORY LN**

Note:

- o Denotes iron pin
- Denotes drainage
- Denotes culvert

Cottages erected on lots shown on this drawing shall be erected with not less than 900 square feet of ground floor area, exclusive of breezeways, porches and garages. New construction material only shall be used. Construction shall not be placed below elevation 842.5 feet.

Trees outside of leased lots shall not be damaged or removed except by written approval of the Engineer of the District.



# HICKORY GROVE COTTAGE AREA

STATE OF OHIO  
MUSKINGUM WATERSHED  
CONSERVANCY DISTRICT

## SENECA LAKE COTTAGE AND HOME SITES

SCALE  
100 0 100 200 FT.

Submitted 9-26-61 Approved 9-26-61

Frank L. Dave H L Hoffman  
CHIEF ENGINEER

LL 23998-23999

DRAWN L&D. OCT. 61  
TRACED-ELD. OCT. 61  
CHECKED  
REVISED 12-61- FD. Lot  
296 corrected from 294  
Number only